

NATIONAL INFRASTRUCTURE COMMISSION

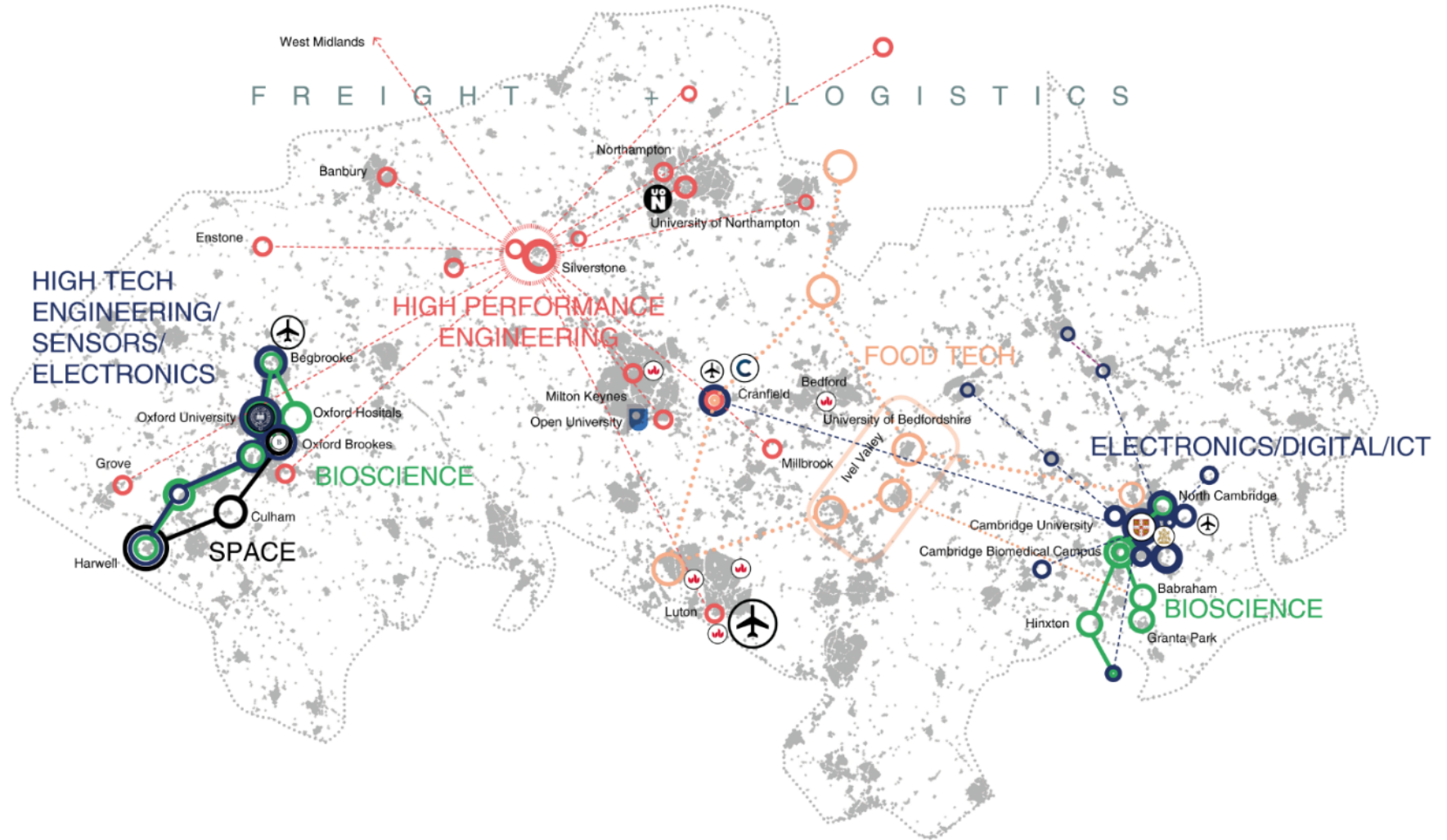
Delivering New Towns in the Cambridge
– Milton Keynes – Oxford Corridor

Bridget Rosewell

Commissioner, National Infrastructure Commission

22 February 2018

Cambridge – Milton Keynes – Oxford



Continued success is not guaranteed

12,250 homes delivered per year 2012-15

14,330 homes delivered in 2016-17

15,926 homes provided for in local plans

30,000 homes to meet local needs & pressures from land constrained markets

An area with significant potential



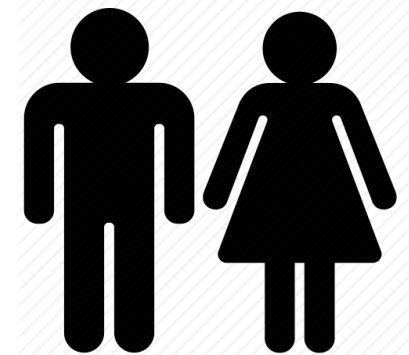
**1.1 million
new jobs
by 2050**

**GVA of £265
billion per
year by 2050**



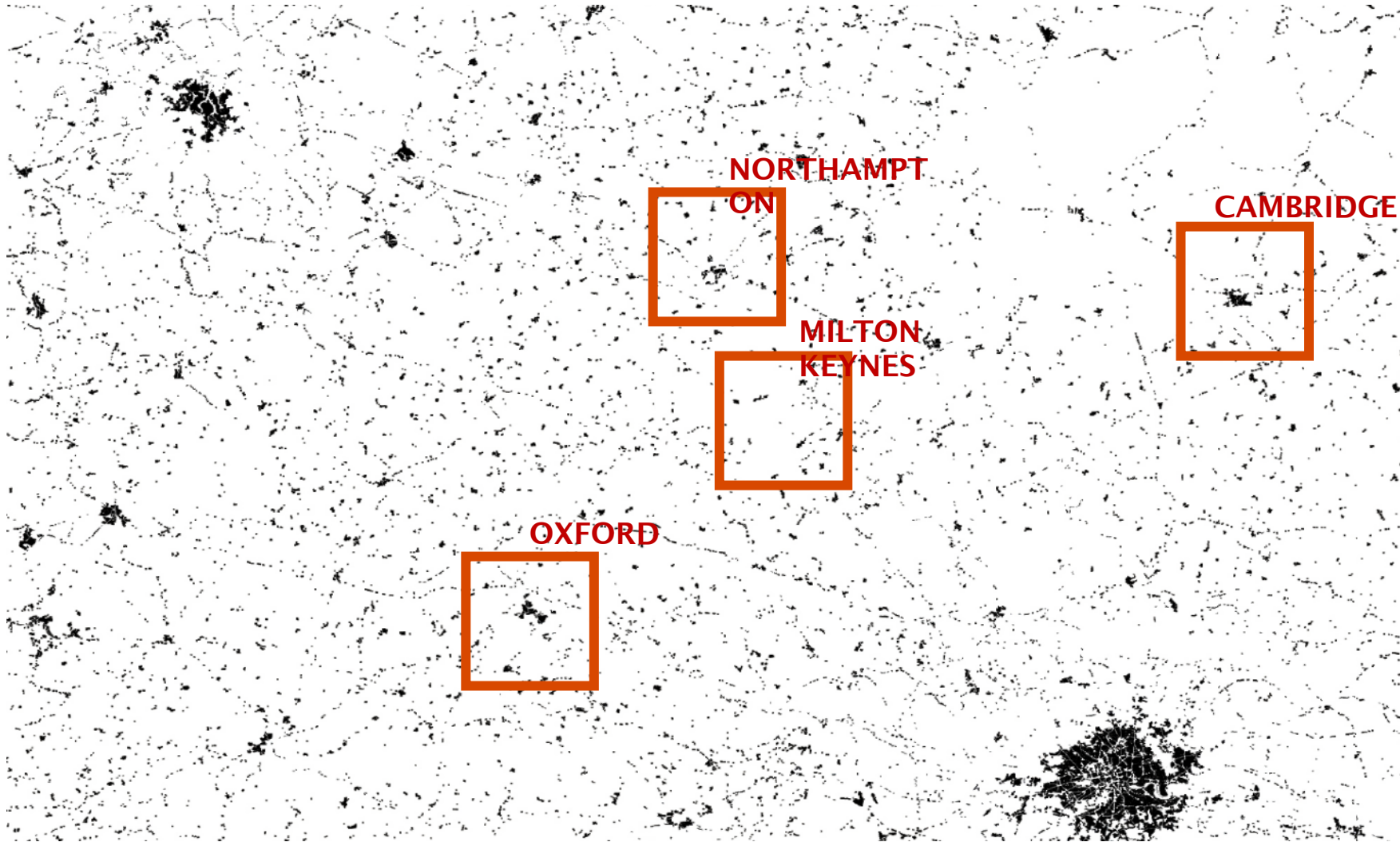
**1 million
new homes
by 2050**

**Up to 1.9
million
new
people**



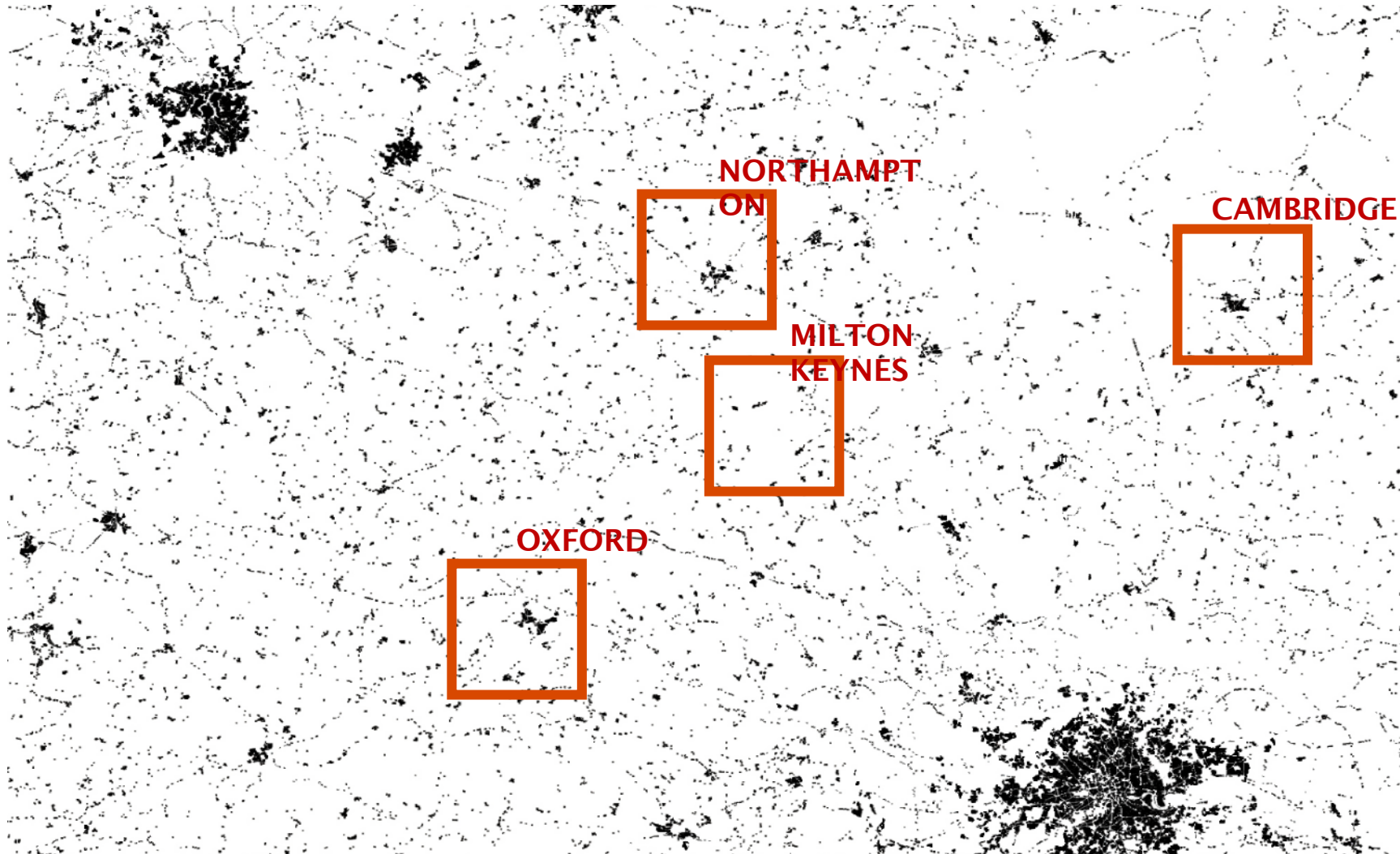
Not an unprecedented rate of growth

1900



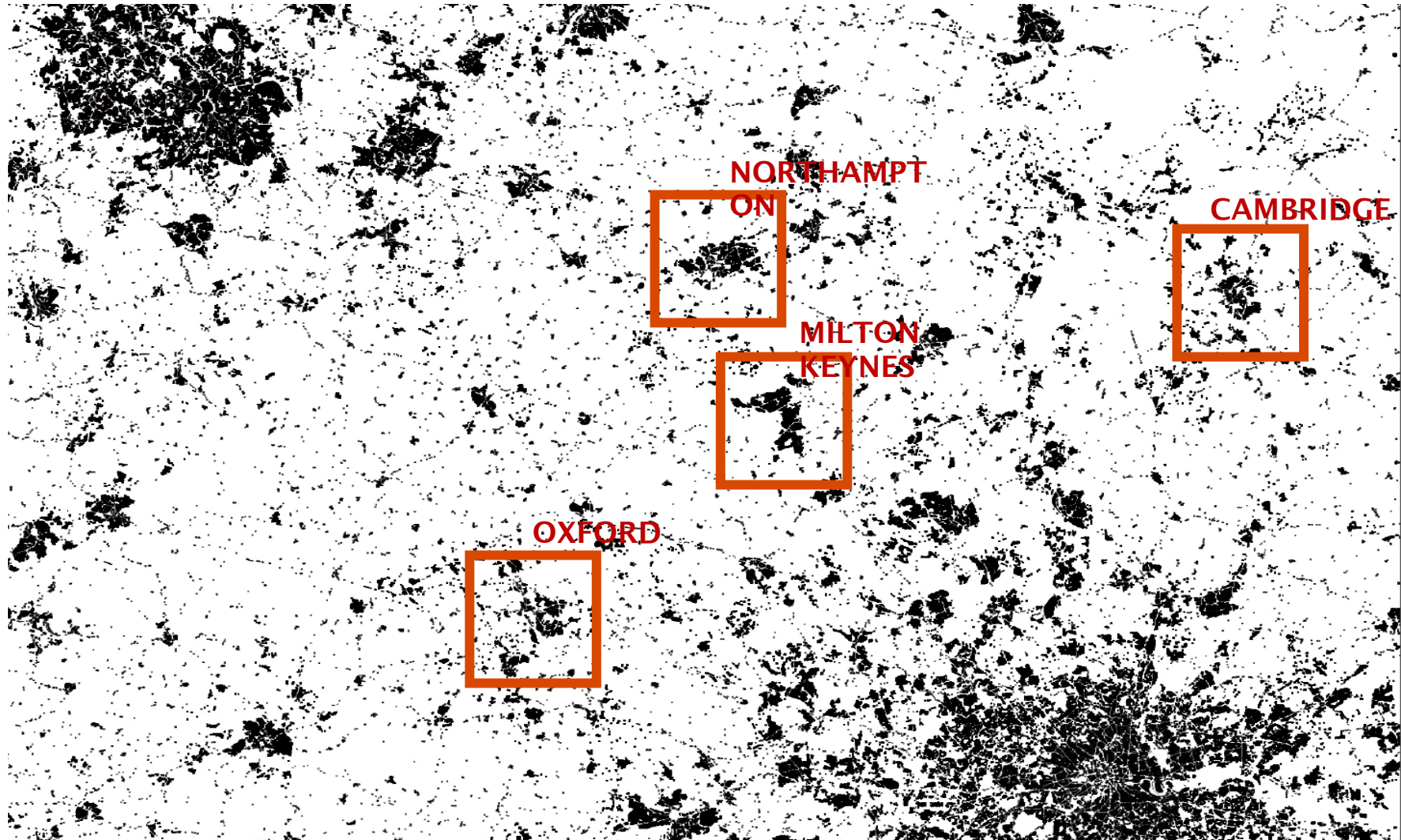
Not an unprecedented rate of growth

1939



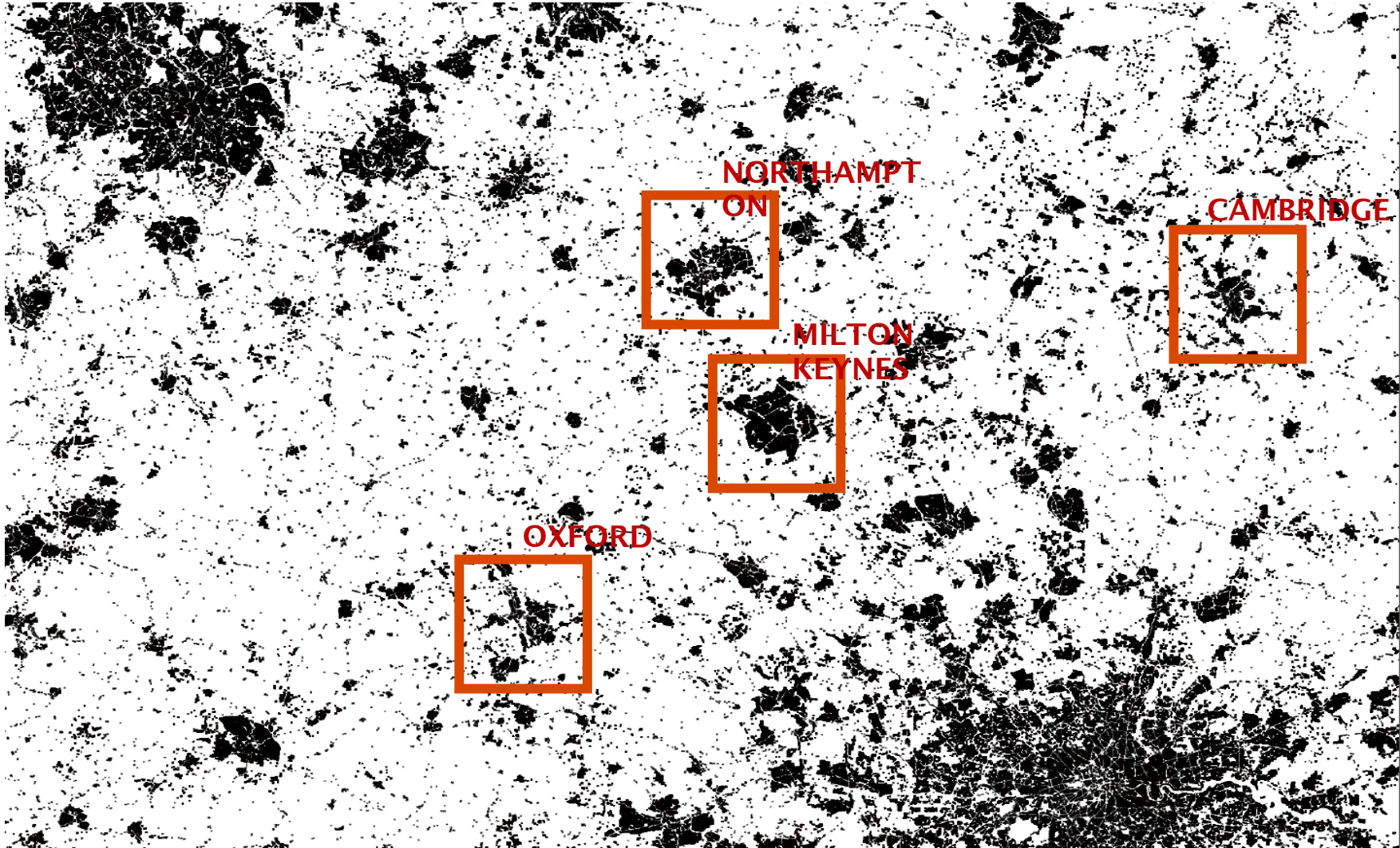
Not an unprecedented rate of growth

1982



Not an unprecedented rate of growth

2015



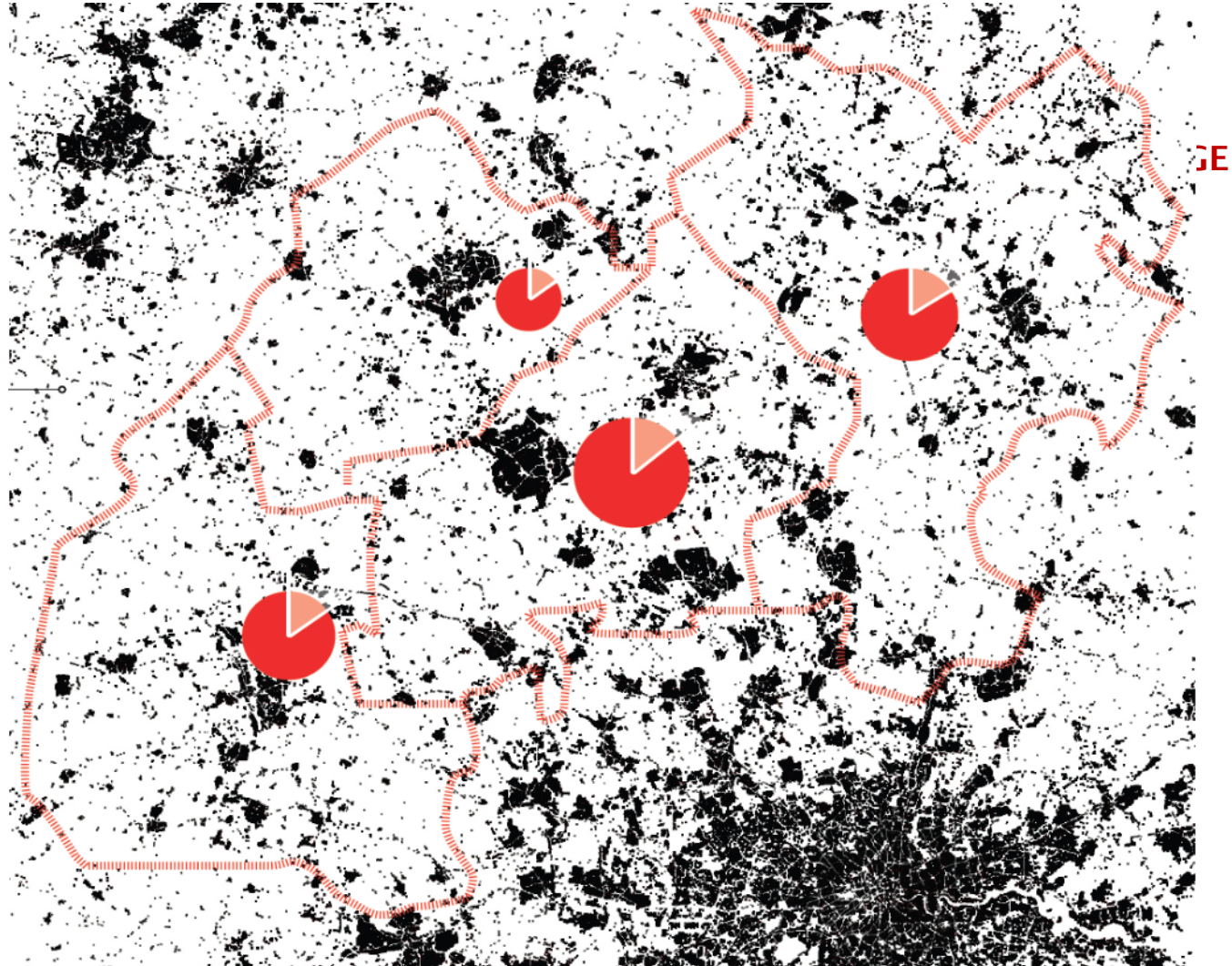
A future challenge

2050

New homes
in the
pipeline



Additional
homes
required



Cambridge



Bedford



Milton Keynes



Bicester



Oxford



Barton Willmore: Innovation Hive



Fletcher Priest: Mid-Vale Archipelago

2022



2025



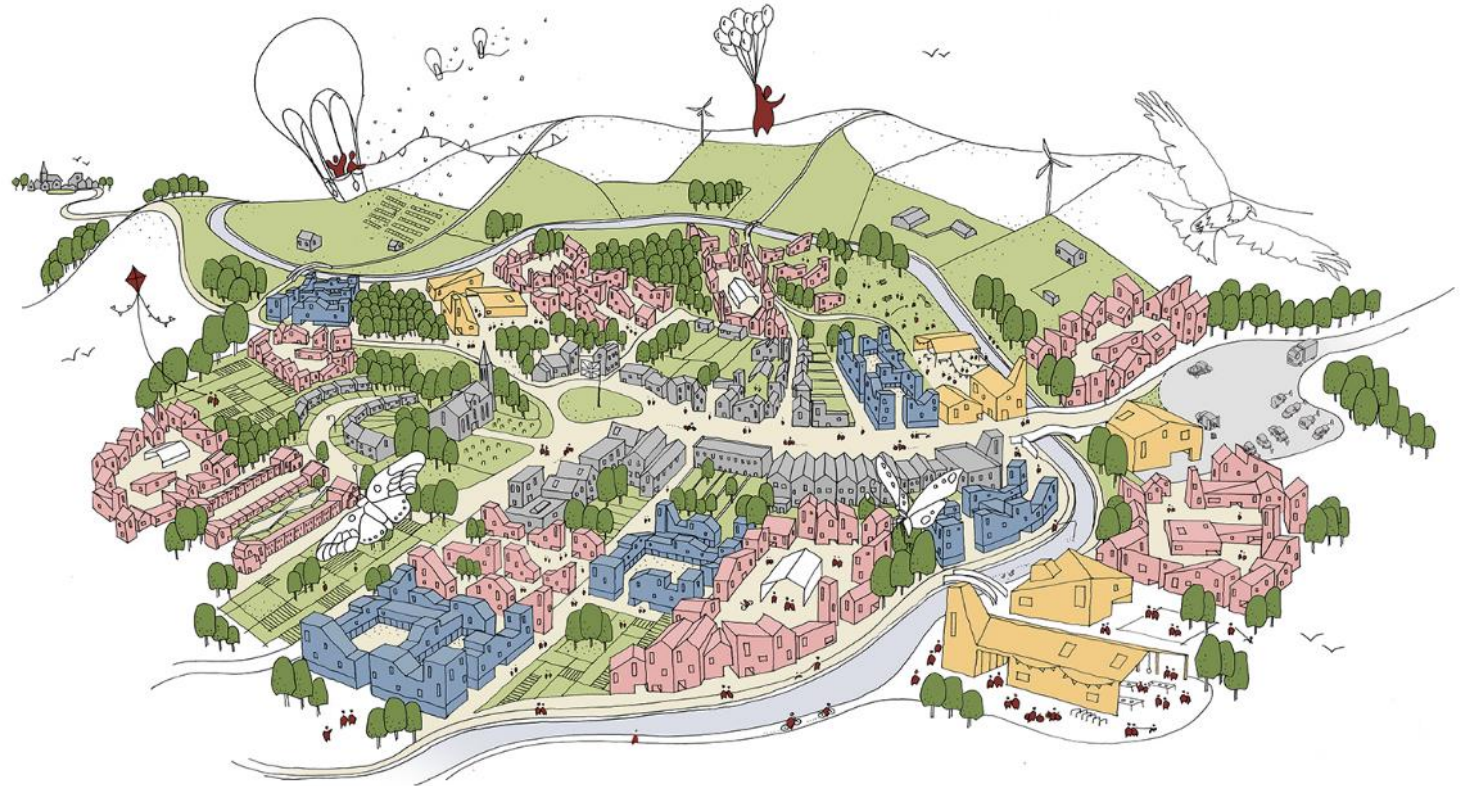
2050



Mae: Urcadia



Tibbalds: VeloCity



A New Deal...

GOVERNMENT



Deliver

NEW TRANSPORT INFRASTRUCTURE

unlocking opportunities for transformational development



PROVIDE THE MECHANISMS AND RESOURCES

to enable new settlements and wider housing growth

LOCAL AREAS



Commit to

DOUBLING THE RATE OF HOUSEBUILDING

attracting the talent and skills that businesses need to grow



DEFINE A LONG TERM VISION

for the arc with the right governance to support delivery

COMMUNITIES



WELL-CONNECTED, THRIVING LOCAL COMMUNITIES

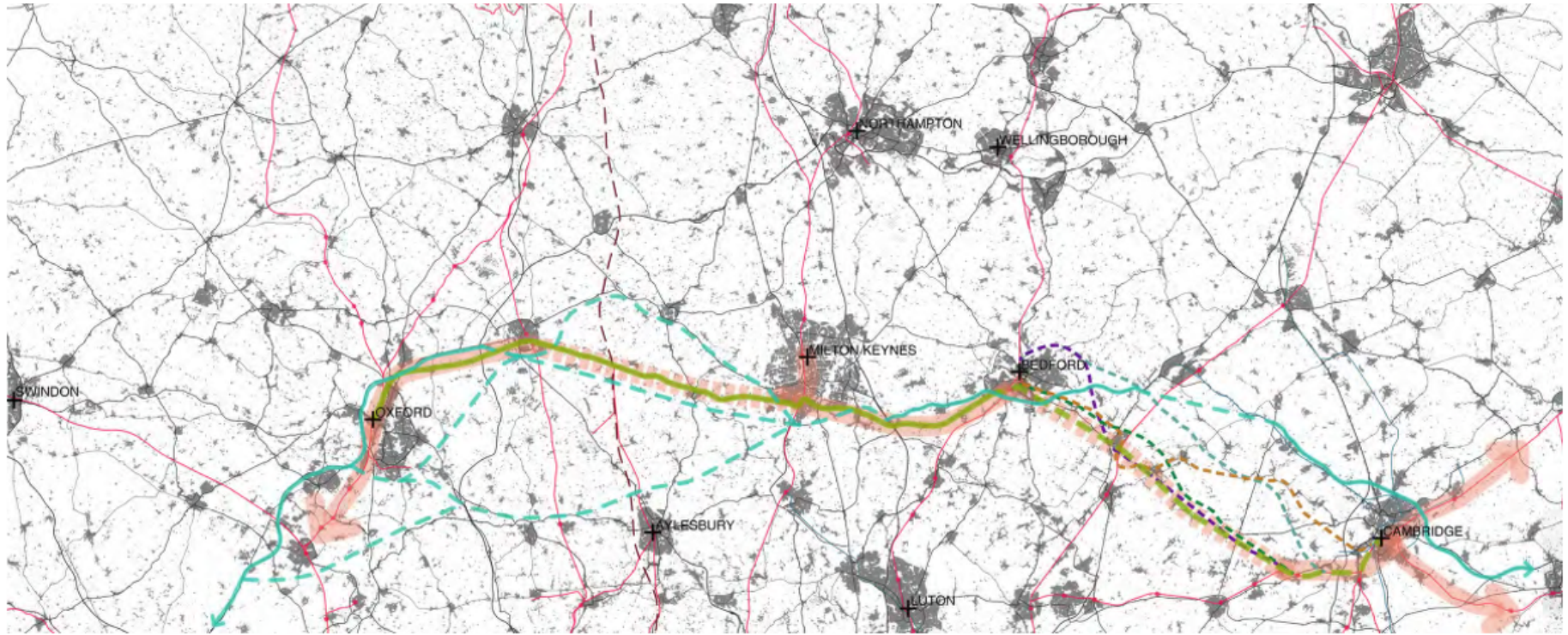
with access to jobs and services, and homes for future generations



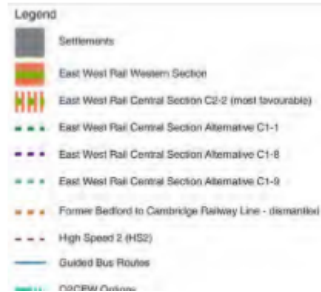
QUALITY OF LIFE AND WELLBEING,

Development must support for new and existing residents, whilst respecting the natural environment

Infrastructure-led



EXISTING AND PROPOSED INFRASTRUCTURE



Contains OS data © Crown copyright and database right (2018)
The drawing also selectively includes data transposed from the following Governmental Agencies:
Historic England | Environment Agency | Natural England | DCLG |
Highways England | Department for Transport | National Infrastructure Commission |



A clear role for new settlements...



Alongside development in existing places



Making the deal work

- Shared vision for the Arc, translated into statutory plans
- Collaboration between the Government and local areas
- Local stakeholders working in the national interest

Questions?

www.nic.org.uk



@NatInfraCom

[linkedin.com/company/
natinfracom/](https://www.linkedin.com/company/natinfracom/)